



2017 catalog

For CO₂ and fiber laser consumables

Replacements parts suitable for Hankwang®



Our value proposition

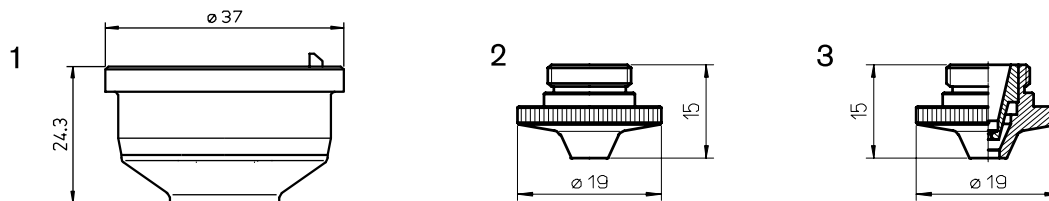
- Product breadth – with over 2,800 part numbers
- OEM quality/consistency for nozzles, ceramics and optics
- Technical/application support from OEM-trained technicians
- 100% satisfaction guarantee





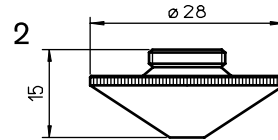
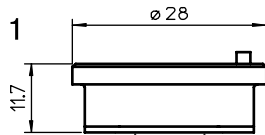
Consumables

	Centricut part number	Reference number	Alternate reference	Description	Pkg qty
1	HW405-1010	NP10	L1070	Nozzle - 1.0 mm	1
	HW405-1012	NP12	L1071	Nozzle - 1.2 mm	1
	HW405-1015	NP15	L1072	Nozzle - 1.5 mm	1
	HW405-1017	NP17	L1073	Nozzle - 1.7 mm	1
	HW405-1020	NP20	L1074	Nozzle - 2.0 mm	1
	HW405-1025	NP25	L1075	Nozzle - 2.5 mm	1
	HW405-1030	NP30	L1076	Nozzle - 3.0 mm	1
2	HW405-3010	NP10	L1490	Nozzle - 1.0 mm	1
	HW405-3012	NP12	L1491	Nozzle - 1.2 mm	1
	HW405-3015	NP15	L1492	Nozzle - 1.5 mm	1
	HW405-3020	NP20	L1493	Nozzle NP 2.0 mm	1
	HW405-3025	NP25	L1494	Nozzle - 2.5 mm	1

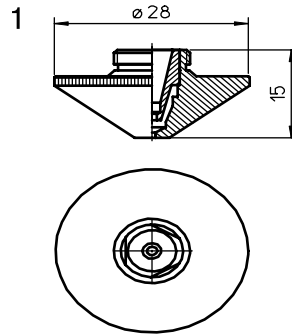


Consumables

	Centricut part number	Reference number	Alternate reference	Description	Pkg qty
1	HW405-1201	HCH-S01201	AL420	Nozzle holder - ceramic	1
2	HW405-2008	NP08, MX-0988	L1482	Nozzle - 0.8 mm	1
	HW405-2010	NP10, MX-0989	L1483	Nozzle - 1.0 mm	1
	HW405-2012	NP12, MX-0990	L1484	Nozzle - 1.2 mm	1
	HW405-2015	NP15, MX-0991	L1485	Nozzle - 1.5 mm	1
	HW405-2018	NP18, MX-0993	L1487	Nozzle - 1.8 mm	1
	HW405-2020	NP20, MX-0992	L1486	Nozzle - 2.0 mm	1
	HW405-2025	NP25, MX-0994	L1488	Nozzle - 2.5 mm	1
HW405-2030	NP30, MX-0995	L1489	Nozzle - 3.0 mm	1	
3	HW405-4010	TP10	L1521	Nozzle - 1.0 mm double	1
	HW405-4015	TP15	L1522	Nozzle - 1.5 mm double	1
	HW405-4020	TP20	L1523	Nozzle - 2.0 mm double	1
	HW405-4025	TP25	L1524	Nozzle - 2.5 mm double	1
	HW405-4030	TP30	L1526	Nozzle - 3.0 mm double	1
	HW405-4040	TP40	L1525	Nozzle - 4.0 mm double	1


Consumables

	Centricut part number	Reference number	Alternate reference	Description	Pkg qty
1	HW405-0811	MX-0875	AL408	Nozzle holder - ceramic	1
	PT345-0008		L935	Nozzle - 0.8 mm HD	1
	PT345-1548	281548, P0591-571-00010, MX-0860	L234	Nozzle - 1.0 mm HD	1
	PT345-1549	281549, P0591-572-00012, MX-0861	L235	Nozzle - 1.2 mm HD	1
	PT345-1463	281463, P0591-573-00015, MX-0862	L236	Nozzle - 1.5 mm HD	1
	PT345-0001	P0591-574-00018, MX-0863	L237	Nozzle - 1.8 mm HD	1
	PT345-1550	281550, P0591-575-00020, MX-0864	L238	Nozzle - 2.0 mm HD	1
	PT345-0003		L239	Nozzle - 2.3 mm HD	1
	PT345-1551	281551, P0591-576-00025, MX-0865	L240	Nozzle - 2.5 mm HD	1
	PT345-1552	MX-0866	L936	Nozzle - 2.75 mm HD	1
	PT345-0002		L241	Nozzle - 3.0 mm HD	1
	PT345-0005		L826	Nozzle - 3.2 mm HD	1
	PT345-0006		L827	Nozzle - 3.5 mm HD	1
	PT345-0004		L828	Nozzle - 4.0 mm HD	1
	PT345-0007		L829	Nozzle - 4.5 mm HD	1
2	PT345-1547CP		L935X	Nozzle - 0.8 mm HD CP	1
	PT345-1548CP	281548, P0591-571-00010	L234X	Nozzle - 1.0 mm HD CP	1
	PT345-1549CP	281549, P0591-572-00012	L235X	Nozzle - 1.2 mm HD CP	1
	PT345-1463CP	281463, P0591-573-00015	L236X	Nozzle - 1.5 mm HD CP	1
	PT345-0001CP		L237X	Nozzle - 1.8 mm HD CP	1
	PT345-1550CP	281550, P0591-575-00020	L238X	Nozzle - 2.0 mm HD CP	1
	PT345-0003CP		L239X	Nozzle - 2.3 mm HD CP	1
	PT345-1551CP	281551, P0591-576-00025	L240X	Nozzle - 2.5 mm HD CP	1
	PT345-1552CP		L936X	Nozzle - 2.75 mm HD CP	1
	PT345-0002CP		L241X	Nozzle - 3.0 mm HD CP	1
	PT345-0005CP		L826X	Nozzle - 3.2 mm HD CP	1
	PT345-0006CP		L827X	Nozzle - 3.5 mm HD CP	1
	PT345-0004CP		L828X	Nozzle - 4.0 mm HD CP	1
	PT345-0007CP		L829X	Nozzle - 4.5 mm HD CP	1



Consumables

Centricut part number	Reference number	Alternate reference	Description	Pkg qty
PT358-0669	Centricut design	L669	Nozzle - 0.8 mm double	1
PT358-0010	Centricut design	L660	Nozzle - 1.0 mm double	1
PT358-0125	Centricut design	L661	Nozzle - 1.2 mm double	1
PT358-0015	Centricut design	L662	Nozzle - 1.5 mm double	1
PT358-0018	Centricut design	L663	Nozzle - 1.8 mm double	1
PT358-0020	Centricut design	L664	Nozzle - 2.0 mm double	1
PT358-0023	Centricut design	L665	Nozzle - 2.3 mm double	1
PT358-0007	Centricut design	L666	Nozzle - 2.5 mm double	1
PT358-0030	Centricut design	L667	Nozzle - 3.0 mm double	1
PT358-0035	Centricut design	L668	Nozzle - 3.5 mm double	1
PT358-0008CP	Centricut design	L669X	Nozzle - 0.8 mm double CP	1
PT358-0010CP	Centricut design	L660X	Nozzle - 1.0 mm double CP	1
PT358-0125CP	Centricut design	L661X	Nozzle - 1.2 mm double CP	1
PT358-0015CP	Centricut design	L662X	Nozzle - 1.5 mm double CP	1
PT358-0018CP	Centricut design	L663X	Nozzle - 1.8 mm double CP	1
PT358-0020CP	Centricut design	L664X	Nozzle - 2.0 mm double CP	1
PT358-0023CP	Centricut design	L665X	Nozzle - 2.3 mm double CP	1
PT358-0025CP	Centricut design	L666X	Nozzle - 2.5 mm double CP	1
PT358-0030CP	Centricut design	L667X	Nozzle - 3.0 mm double CP	1
PT358-0035CP	Centricut design	L668X	Nozzle - 3.5 mm double CP	1

Optics

Centricut part number	Reference number	Type	Diameter	Focal length	Edge thickness
Lenses					
HW405-5270	355270	MEN	2.0"	5.0"	.378"
HW405-7143	527143	MEN	2.0"	7.5"	.378"
HW405-4913	114913	MEN	2.0"	10"	.378"

Optics care

Centricut part number	Reference number	Description	Pkg qty
TR300-6452	N/A	Lens cleaning paper, Tiffen - 50 piece	1
AM313-SC50	SC50	Lens cleaning paper, Tresor - 50 piece	1
TR300-1115		Lens cleaning pre-cut cotton - 80 piece	1
TR300-SC20		Cotton swab - 20 piece	1
TR300-1010	AL1010	Dropper, lens cleaning fluid	1
TR300-1112		Optical cleaning fluid	1
TR300-0699	70675699 REVA	Lens Cleaning Swabs (25 pack)	1
TR300-7991	027991	Polyester Wipes 4" x 4"	1
TR301-0282		Injector	1
TR300-LSA		Lens stress analyzer	1
TR300-255	AL255	Loupe, magnifying	1
TR300-271	AL271	Base, lens maintenance	1
TR300-7388	787388	Mirror polish (250 ml)	1

Centricut is not affiliated with the named manufacturers. Reference to machines, parts, descriptions, and model numbers are for convenience in verifying compatibility only. All parts are made by or for Centricut and are not made by the referenced manufacturers (unless expressly indicated). Centricut is a registered trademark of Hypertherm, Inc. All other trademarks are the properties of their respective owners.

Technical support

- Our technical service team can answer questions about any laser or plasma cutting system. Whether it's a question about a part, a system, or for guidance on how to optimize performance, our experts can help.
- We stand behind our products with industry-leading technical expertise
- OEM trained technicians on staff with over 25 years experience



**HELPING YOU
SHAPE THE WORLD.**



PLASMA | LASER | WATERJET | AUTOMATION | SOFTWARE | CONSUMABLES

For more information on Centricut laser products, visit
www.hypertherm.com/centricut/laser

Hypertherm, Centricut, SilverLine and CoolFlow are trademarks of Hypertherm Inc., and may be registered in the United States and/or other countries. All other trademarks are the property of their respective owners.

One of Hypertherm's long-standing core values is a focus on minimizing our impact on the environment. Doing so is critical to our, and our customers' success. We are always striving to become better environmental stewards; it is a process we care deeply about.

© 12/2016 Hypertherm Inc.



Hypertherm[®]
SHAPING POSSIBILITY™

