



## 2017 catalog

For CO<sub>2</sub> and fiber laser consumables

Replacements parts suitable for Salvagnini®

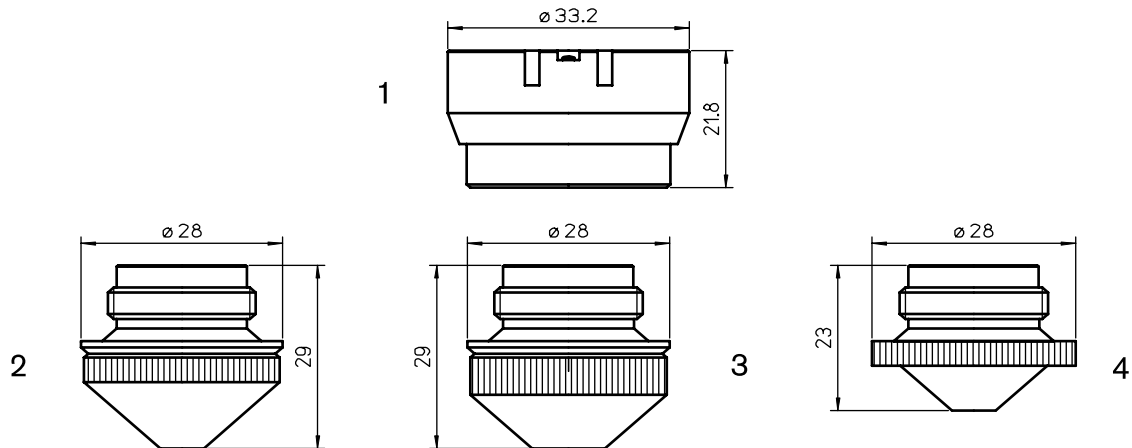


## Our value proposition

- Product breadth – with over 2,800 part numbers
- OEM quality/consistency for nozzles, ceramics and optics
- Technical/application support from OEM-trained technicians
- 100% satisfaction guarantee



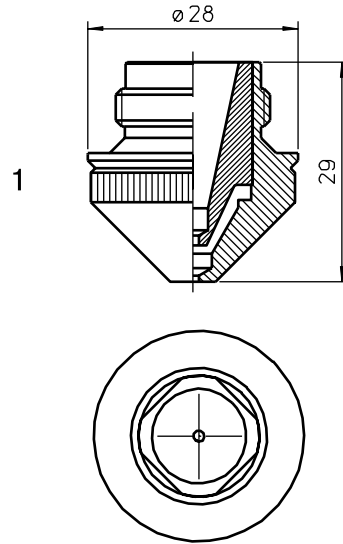
**5\*DL PRECITEC® SENSOR SYSTEM**



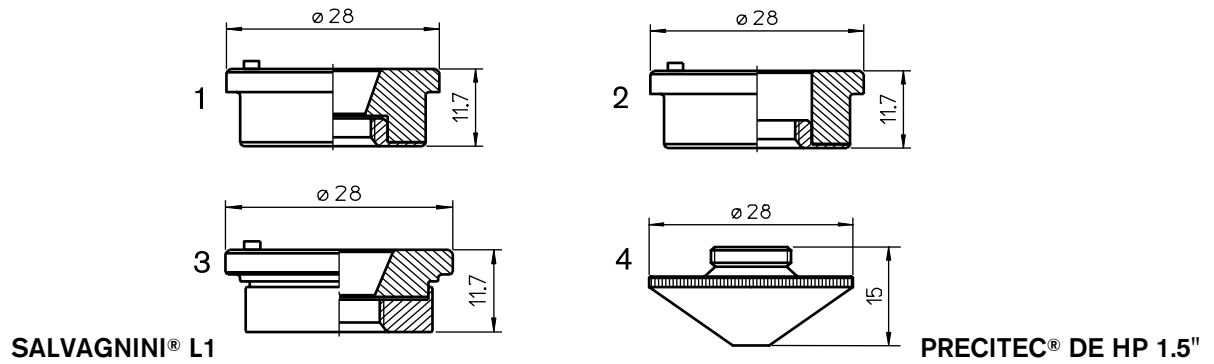
**Consumables**

	Centricut part number	Reference number	Alternate reference	Description	Pkg qty
1	PT311-1146 <b>Recommended</b>	281146, P0380-211-00001	AL130/S	Nozzle holder - IT M1.5" DZ - aluminum	1
	PT311-1146OEM	281146, P0380-211-00001	AL130	Nozzle holder - IT M1.5" DZ - aluminum	1
2	SA365-00A4	141300A4	L374	Nozzle - 0.75 mm	1
	SA365-01A4	146331A4	L375	Nozzle - 1.0 mm	1
	SA365-30A4	146330A4	L376	Nozzle - 1.25 mm	1
	SA365-97A4	146329A4, 142321A4	L377	Nozzle - 1.5 mm	1
	SA365-98A4	146328A4	L378	Nozzle - 1.75 mm	1
	SA365-99A4	146327A4, 142322A4	L379	Nozzle - 2.0 mm	1
	SA365-25A4	146326A4	L381	Nozzle - 2.25 mm	1
	SA365-26A4	146325A4, 142324A4	L380	Nozzle - 2.5 mm	1
	SA365-24A4	146324A4	L888	Nozzle - 2.75 mm	1
	SA365-23A4	146323A4	L889	Nozzle - 3.0 mm	1
	SA365-00A4CP	141300A4	L374X	Nozzle - 0.75 mm CP	1
	SA365-01A4CP	146331A4	L375X	Nozzle - 1.0 mm CP	1
	SA365-30A4CP	146330A4	L376X	Nozzle - 1.25 mm CP	1
	SA365-97A4CP	146329A4	L377X	Nozzle - 1.5 mm CP	1
	SA365-98A4CP	146328A4	L378X	Nozzle - 1.75 mm CP	1
	SA365-99A4CP	146327A4	L379X	Nozzle - 2.0 mm CP	1
	SA365-26A4CP	146326A4	L381X	Nozzle - 2.25 mm CP	1
	SA365-25A4CP	146325A4	L380X	Nozzle - 2.5 mm CP	1
	SA365-24A4CP	146324A4	L888X	Nozzle - 2.75 mm CP	1
	SA365-23A4CP	146323A4	L889X	Nozzle - 3.0 mm CP	1
3	SA365-0001		L570	Nozzle - 1.2 mm	1
4	SA365-51A4	144151A4	L1000	Nozzle - 2.0 mm short	1
	SA365-125A4	144125A4	L1001	Nozzle - 2.25 mm short	1
	SA365-52A4	144152A4	L1002	Nozzle - 2.5 mm short	1
	SA365-57A4	144057A4	L1005	Nozzle - 2.75 mm short	1
	SA365-53A4	144153A4	L1003	Nozzle - 3.0 mm short	1

Centricut is not affiliated with the named manufacturers. Reference to machines, parts, descriptions, and model numbers are for convenience in verifying compatibility only. All parts are made by or for Centricut and are not made by the referenced manufacturers (unless expressly indicated). Centricut is a registered trademark of Hypertherm, Inc. All other trademarks are the properties of their respective owners.

5"DL PRECITEC® SENSOR SYSTEM

**Consumables**

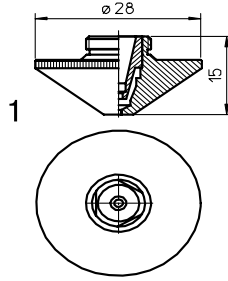
	Centricut part number	Reference number	Alternate reference	Description	Pkg qty
	SA423-0001	Centricut design	L988X	Nozzle - 1.0 mm double CP	1
	SA423-0002	Centricut design	L989X	Nozzle - 1.25 mm double CP	1
	SA423-0003	Centricut design	L990X	Nozzle - 1.5 mm double CP	1
	SA423-0004	Centricut design	L991X	Nozzle - 1.75 mm double CP	1
1	SA423-0005	Centricut design	L992X	Nozzle - 2.0 mm double CP	1
	SA423-0006	Centricut design	L993X	Nozzle - 2.25 mm double CP	1
	SA423-0007	Centricut design	L994X	Nozzle - 2.5 mm double CP	1
	SA423-0008	Centricut design	L995X	Nozzle - 2.7 mm double CP	1
	SA423-0009	Centricut design	L996X	Nozzle - 3.0 mm double CP	1



**Consumables**

	Centricut part number	Reference number	Alternate reference	Description	Pkg qty
1	PT348-1051	P0571-1051-00001	AL355	Nozzle holder - OEM KT B2"	1
	PT348-1052 <b>Recommended</b>	P0571-1051-00001	AL495	Nozzle holder KT B2 Con	1
	PT348-1053	P0571-1051-00001	AL380	Nozzle holder KT B2 Con	1
2	PT348-1330 <b>Recommended</b>	281330, P0571-260-00001	AL131	Nozzle holder - ceramic	1
	PT348-0260	P0571-260-00001	AL421	Nozzle holder KT B2 Cyl	1
	PT348-1330OEM	281330, P0571-260-00001	AL23	Nozzle holder - ceramic (OEM)	1
3	PT348-1330C	P0571-260-00001	AL331	Nozzle holder - ceramic	1
4	PT345-0008		L935	Nozzle - 0.8 mm HD	1
	PT345-1548	281548, P0591-571-00010	L234	Nozzle - 1.0 mm HD	1
	PT345-1549	281549, P0591-572-00012	L235	Nozzle - 1.2 mm HD	1
	PT345-1463	281463, P0591-573-00015	L236	Nozzle - 1.5 mm HD	1
	PT345-0001	P0591-574-00018	L237	Nozzle - 1.8 mm HD	1
	PT345-1550	281550, P0591-575-00020	L238	Nozzle - 2.0 mm HD	1
	PT345-0003		L239	Nozzle - 2.3 mm HD	1
	PT345-1551	281551, P0591-576-00025	L240	Nozzle - 2.5 mm HD	1
	PT345-1552		L936	Nozzle - 2.75 mm HD	1
	PT345-0002		L241	Nozzle - 3.0 mm HD	1
	PT345-0005		L826	Nozzle - 3.2 mm HD	1
	PT345-0006		L827	Nozzle - 3.5 mm HD	1
	PT345-0004		L828	Nozzle - 4.0 mm HD	1
	PT345-0007		L829	Nozzle - 4.5 mm HD	1
	PT345-1548CP	281548, P0591-571-00010	L234X	Nozzle - 1.0 mm HD CP	1
	PT345-1549CP	281549, P0591-572-00012	L235X	Nozzle - 1.2 mm HD CP	1
	PT345-1463CP	281463, P0591-573-00015	L236X	Nozzle - 1.5 mm HD CP	1
	PT345-0001CP		L237X	Nozzle - 1.8 mm HD CP	1
	PT345-1550CP	281550, P0591-575-00020	L238X	Nozzle - 2.0 mm HD CP	1
	PT345-0003CP		L239X	Nozzle - 2.3 mm HD CP	1
	PT345-1551CP	281551, P0591-576-00025	L240X	Nozzle - 2.5 mm HD CP	1
	PT345-1552CP		L936X	Nozzle - 2.75 mm HD CP	1
	PT345-0002CP		L241X	Nozzle - 3.0 mm HD CP	1
	PT345-0005CP		L826X	Nozzle - 3.2 mm HD CP	1
	PT345-0006CP		L827X	Nozzle - 3.5 mm HD CP	1
	PT345-0004CP		L828X	Nozzle - 4.0 mm HD CP	1
	PT345-0007CP		L829X	Nozzle - 4.5 mm HD CP	1

Centricut is not affiliated with the named manufacturers. Reference to machines, parts, descriptions, and model numbers are for convenience in verifying compatibility only. All parts are made by or for Centricut and are not made by the referenced manufacturers (unless expressly indicated). Centricut is a registered trademark of Hypertherm, Inc. All other trademarks are the properties of their respective owners.



**SALVAGNINI® L1**

**PRECITEC® DE HP 1.5"**

**Consumables**

	Centricut part number	Reference number	Alternate reference	Description	Pkg qty
	PT358-0669	Centricut design	L669	Nozzle - 0.8 mm double	1
	PT358-0010	Centricut design	L660	Nozzle - 1.0 mm double	1
	PT358-0125	Centricut design	L661	Nozzle - 1.2 mm double	1
	PT358-0015	Centricut design	L662	Nozzle - 1.5 mm double	1
	PT358-0018	Centricut design	L663	Nozzle - 1.8 mm double	1
	PT358-0020	Centricut design	L664	Nozzle - 2.0 mm double	1
	PT358-0023	Centricut design	L665	Nozzle - 2.3 mm double	1
	PT358-0007	Centricut design	L666	Nozzle - 2.5 mm double	1
	PT358-0030	Centricut design	L667	Nozzle - 3.0 mm double	1
1	PT358-0035	Centricut design	L668	Nozzle - 3.5 mm double	1
	PT358-0010CP	Centricut design	L660X	Nozzle - 1.0 mm double CP	1
	PT358-0125CP	Centricut design	L661X	Nozzle - 1.2 mm double CP	1
	PT358-0015CP	Centricut design	L662X	Nozzle - 1.5 mm double CP	1
	PT358-0018CP	Centricut design	L663X	Nozzle - 1.8 mm double CP	1
	PT358-0020CP	Centricut design	L664X	Nozzle - 2.0 mm double CP	1
	PT358-0023CP	Centricut design	L665X	Nozzle - 2.3 mm double CP	1
	PT358-0025CP	Centricut design	L666X	Nozzle - 2.5 mm double CP	1
	PT358-0030CP	Centricut design	L667X	Nozzle - 3.0 mm double CP	1
	PT358-0035CP	Centricut design	L668X	Nozzle - 3.5 mm double CP	1

Centricut is not affiliated with the named manufacturers. Reference to machines, parts, descriptions, and model numbers are for convenience in verifying compatibility only. All parts are made by or for Centricut and are not made by the referenced manufacturers (unless expressly indicated). Centricut is a registered trademark of Hypertherm, Inc. All other trademarks are the properties of their respective owners.

**Optics**

Centricut part number	Reference number	Type	Material	Diameter	Focal length	Edge thickness
<b>Lenses</b>						
SA384-0022	316-301-0022	PLX	FS	25.4 mm	200 mm	6.35 mm
SA384-0026	316-301-0026, ESTFLO2119	PLX	FS	38.1 mm	210 mm	6.36 mm

Centricut part number	Reference number	Material	Diameter	Edge thickness
<b>Windows</b>				
SA384-0007	316-304-0007	FS	32.0 mm	6.35 mm

**Optics care**

Centricut part number	Reference number	Description	Pkg qty
TR300-6452	N/A	Lens cleaning paper, Tiffen - 50 piece	1
AM313-SC50	SC50	Lens cleaning paper, Tresor - 50 piece	1
TR300-1115		Lens cleaning pre-cut cotton - 80 piece	1
TR300-SC20		Cotton swab - 20 piece	1
TR300-1010	AL1010	Dropper, lens cleaning fluid	1
TR300-1112		Optical cleaning fluid	1
TR300-0699	70675699 REVA	Lens Cleaning Swabs (25 pack)	1
TR300-7991	027991	Polyester Wipes 4" x 4"	1
TR301-0282		Injector	1
TR300-LSA		Lens stress analyzer	1
TR300-255	AL255	Loupe, magnifying	1
TR300-271	AL271	Base, lens maintenance	1
TR300-7388	787388	Mirror polish (250 ml)	1

## Technical support

- Our technical service team can answer questions about any laser or plasma cutting system. Whether it's a question about a part, a system, or for guidance on how to optimize performance, our experts can help.
- We stand behind our products with industry-leading technical expertise
- OEM trained technicians on staff with over 25 years experience





**HELPING YOU  
SHAPE THE WORLD.**



PLASMA | LASER | WATERJET | AUTOMATION | SOFTWARE | CONSUMABLES

For more information on Centricut laser products, visit  
[www.hypertherm.com/centricut/laser](http://www.hypertherm.com/centricut/laser)

Hypertherm, Centricut, SilverLine and CoolFlow are trademarks of Hypertherm Inc., and may be registered in the United States and/or other countries. All other trademarks are the property of their respective owners.

One of Hypertherm's long-standing core values is a focus on minimizing our impact on the environment. Doing so is critical to our, and our customers' success. We are always striving to become better environmental stewards; it is a process we care deeply about.

© 12/2016 Hypertherm Inc.



**Hypertherm**<sup>®</sup>  
SHAPING POSSIBILITY™

